



# VISULOG

Configuration and data acquisition  
software for monitoring and  
supervision

VISULOG is an easy-to-use yet powerful software to use in combination with AOIP acquisition systems, calibration and measurement instruments. The software allows data to be acquired, managed, and stored on a computer.

- Measurement and calculation channels
- Edition of comprehensive and customizable calibration reports
- Customizable visualization panel
- 4 optional modules for advanced use:
  - Calibration module
  - Module of advanced management of access rights (21 CFR Part 11)
  - Chamber mapping module
  - Remote access and control module

## Description

VISULOG is an easy-to-use yet powerful software to use in combination with AOIP acquisition systems, calibration and measurement instruments. The software allows data to be acquired, managed, and stored on a computer.

- Measurement and calculation channels
- Edition of comprehensive and customizable calibration reports
- Customizable visualization panel
- 4 optional modules for advanced use:
  - Calibration module
  - Module of advanced management of access rights (21 CFR Part 11)
  - Chamber mapping module
  - Remote access and control module

VISULOG allows acquisition on a computer to be performed over more than 5000 channels. It provides calculation channels, for statistics and advanced calculation as, for instance, required in oven mapping applications.

Users can define result files, audit trails and manage the acquisitions.



### Build your own screen

Measurements can be displayed as a list of results, curves, bargraphs and high definition diagrams.

Pictures or schematic of your installation can be set as a background of the screen, then you can place curves, channels values close the real points.

All the results can be exported to spread sheets as excel or other softwares. Alarms can be also defined by the user (4 alarms per channel). These alarms can generate pop up windows on the control screen. Emails to one or several users in charge of supervision can also be generated.

## VISULOG-PHARMA: Optional module for advanced management of access rights - Compliance to 21 CFR part 11 - FDA Standard

VISULOG software can be configured to fulfil all the 21 CFR part 11 requirements:

- Security Management

- Personal login and password

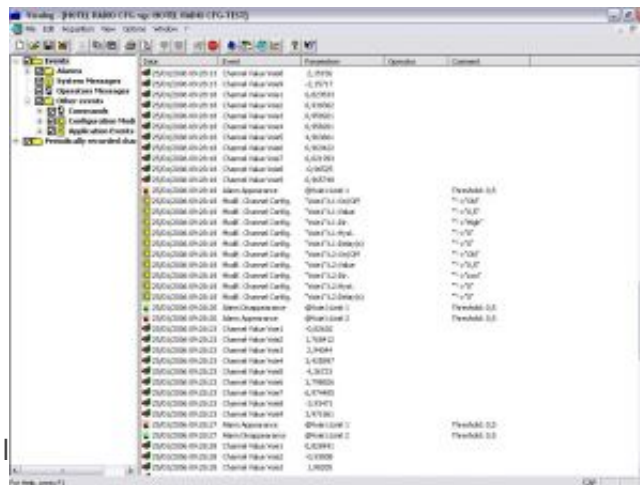
- 3 levels of rights: Administrator, Super-User, User

Each level gives specific rights. Passwords will automatically expire unless renewed within a configurable time.

User accounts are disabled after a number of failed login attempts and failures are logged into the audit trail

An acknowledgment, or signature, is required for every action including alarms validation.

Results files are stored in a VISULOG format: \*.vgc



- Audit trail

All the events are recorded into a protected file: connections, disconnections, alarms appearance/clearance, configuration modifications, results readings...

*Please do not hesitate to contact AOIP to ask for our "white paper", explaining step by step the compliance of VISULOG to the FDA 21 CFR PART 11 requirements, regarding data saving, access restrictions and audit trails.*

## VISULOG-ETAL : Optional module for sensor calibration

This module enables sensor calibration to be managed and fully automatized. An unlimited number of calibration procedures can be created.

Every sensor can be automatically calibrated after configuration by comparison either to a standard sensor connected to a channel of an acquisition system, either to an external reference. Results are registered and integrated into VISULOG software: applied corrections, standard references, calibrated values...

After calibration, the user can create a customized calibration report.

### Applications :

Autoclave validation

With the sensor calibration facility, full autoclave validation can be performed with VISULOG software and an AOIP data acquisition system:

Process description:

- Pre calibration of the temperature sensors, adjustment performed into the data-logging system, BEFORE the validation process
- Autoclave validation with real-time monitoring and F0 calculation
- Post calibration of the temperature sensors

### **Monitoring**

Monitoring of chambers, cooler, cool rooms in R&D or production processes within pharmaceutical / medical environments, food industry...in order to control the non-drift of chambers and ensure the traceability of the environment in which tests are performed.

## VISULOG-CARTO : Optional module for mapping of thermal & climatic chambers and storage rooms

VISULOG-CARTO can perform in real time characterization, qualification, mapping and validation of a chamber or a storage room according to IEC60068-3-11.

Mapping allows characteristics of room to be precisely defined in terms of stability, homogeneity and horizontal and vertical thermal gradients between measurement points within the chamber.

### Applications :

#### **Storage rooms**

In case of storage applications and depending on the type of products stored, it is necessary to define with accuracy the climatic conditions at every part of the room. Knowing the temperature and humidity differences inside the room, sensitive products can be stored according to their storage and behavior specifications.

Once the sensors are placed, the room is controlled and monitored in real time during days and nights and eventually warns the supervisor of changing conditions with alarm emails.

#### Climatic and thermostatic chambers

VISULOG mapping facilities will perform all the necessary operations according the standard IEC60068-3-11.

For every sensor and between all sensors, values of stability, homogeneity, maximum, minimum, mean and standard deviation are calculated and displayed.

Deviations to the set point and to the indicator are also taken into account.

VISULOG mapping of climatic chambers is the use of humidity sensors is required. 2m<sup>3</sup> and between 2 m<sup>3</sup> and 20m<sup>3</sup> and

## VISULOG-WEB : Optional module for remote control and monitoring

This module enables users to have a real-time remote control and monitoring of the acquisition and to access data under acquisition and stored in VISULOG.

Via any network, VISULOG-WEB is accessible from any Internet browser to real time display channels, result files, alarms and log files.



Access is protected by ID and password.



# Specifications

## Instruments supported by VISULOG

**AOIP acquisition  
systems**

**AOIP measuring and  
calibrating  
instruments**

**Further instruments**

## Models and accessories

For all instruments except FD 5 / 10 / 15, PC 10 and T2RN:

### Software and optional modules:

VISULOG Monitoring & data processing software full version - 1 licence

VISULOG-ETAL Monitoring & data processing software full version - 1 licence  
+ Calibration module

VISULOG-PHARMA Monitoring & data processing software full version - 1 licence  
+ Module for advanced management of access rights, 21 CFR Part 11  
compliant

VISULOG-ETAL-PHARMA Monitoring & data processing software full version - 1 licence  
+ Calibration module  
+ Module for advanced management of access rights, 21 CFR Part 11  
compliant

### Software licenses :

LIC VISU Additional license for VISULOG

LIC VISU ETAL Additional license for VISULOG with ETAL optional module

LIC VISU PHARMA Additional license for VISULOG with PHARMA optional module

LIC VISU ETAL PHARMA Additional license for VISULOG with ETAL and PHARMA optional  
module

LIC VISULOG WEB License for VISULOG WEB

For FD 5 / 10 / 15, PC 10 and T2RN:

### Software and optional modules:

VISULOGTM Monitoring & data processing software light version - 1 licence

VISULOGTM-ETAL Monitoring & data processing software light version - 1 licence  
+ Calibration module

VISULOGTM-PHARMA Monitoring & data processing software light version - 1 licence  
+ Module for advanced management of access rights, 21 CFR Part 11  
compliant

VISULOGTM-ETAL-PHARMA Monitoring & data processing software light version - 1 licence  
+ Calibration module



+ Module for advanced management of access rights, 21 CFR Part 11  
compliant

Software licences:

LIC VISU TM Additional license for VISULOGTM

LIC VISU TM ETAL Additional license for VISULOGTM with ETAL optional module

LIC VISU TM PHARMA Additional license for VISULOGTM with PHARMA optional module

LIC VISU TM ETAL PHARMA Additional license for VISULOGTM with ETAL and PHARMA optional  
module